



Prime Retail/Commercial Acres for Sale

I-985 Exit 12
Flowery Branch
Georgia, 30542

CONTACT:

Daren Wayne
770-540-7962
daren@wayne-trading.com

ABOUT THE PROPERTY

- 7.2 +/- Retail/Commercial Acres for Sale
- City of Flowery Branch -HB (Highway Business) Zoning

LOCATION INFORMATION

- I-985 Exit 12
- 7.2 +/- acre tract fronts Thurmon Tanner Pkwy 200 ft from Phil Niekro Blvd/Spout Springs Rd
- Growing Interchange with New Multi-family and Planned Medical office.

PRICE

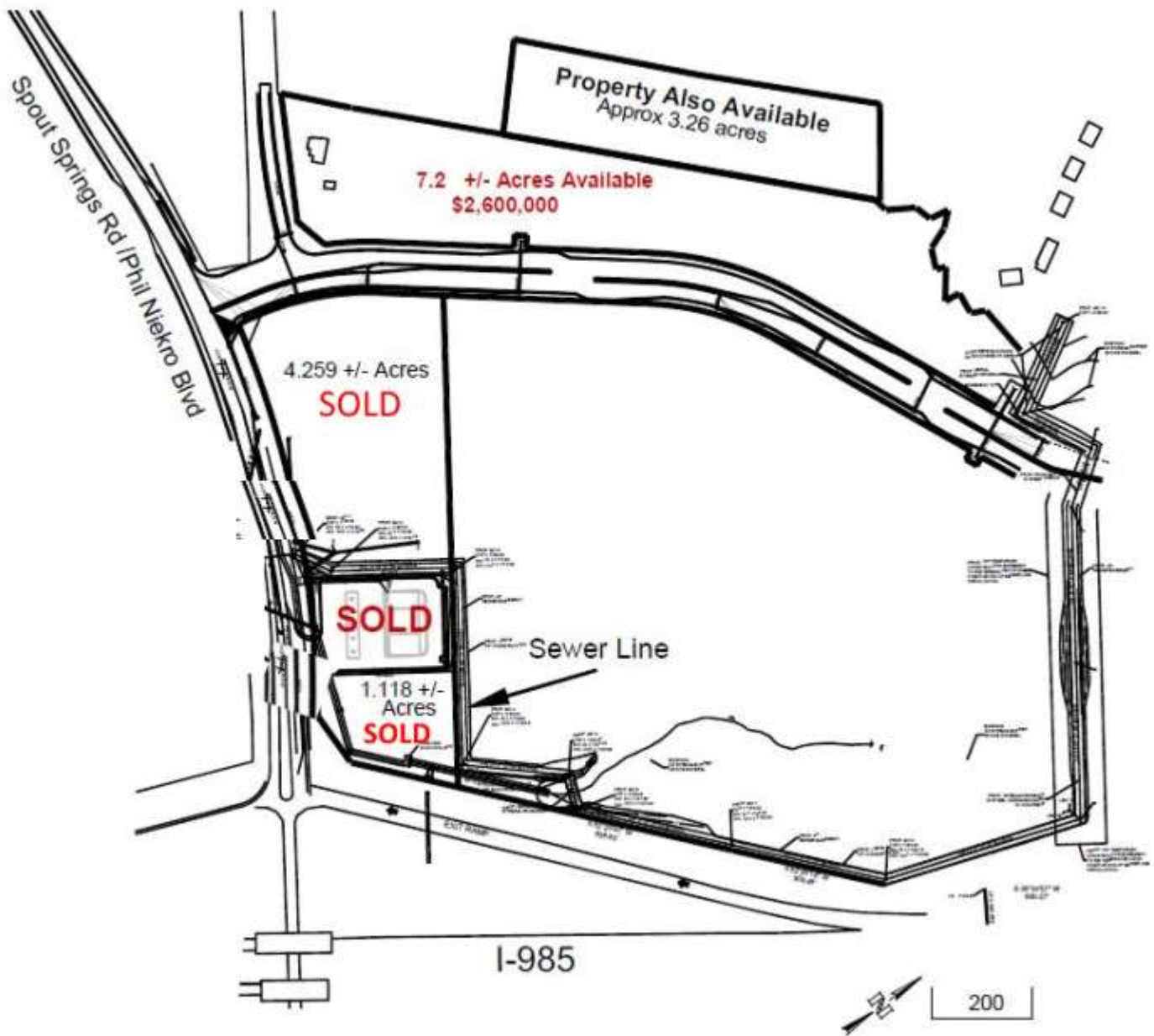
- \$2,600,000



Radial Property Group, LLC

Office: 770-967-4625

www.RPG-CRE.com



Radial Property Group, LLC

Office: 770-967-4625

www.RPG-CRE.com